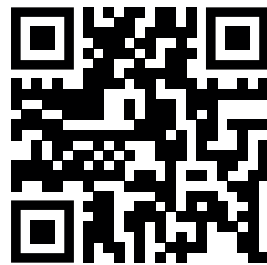


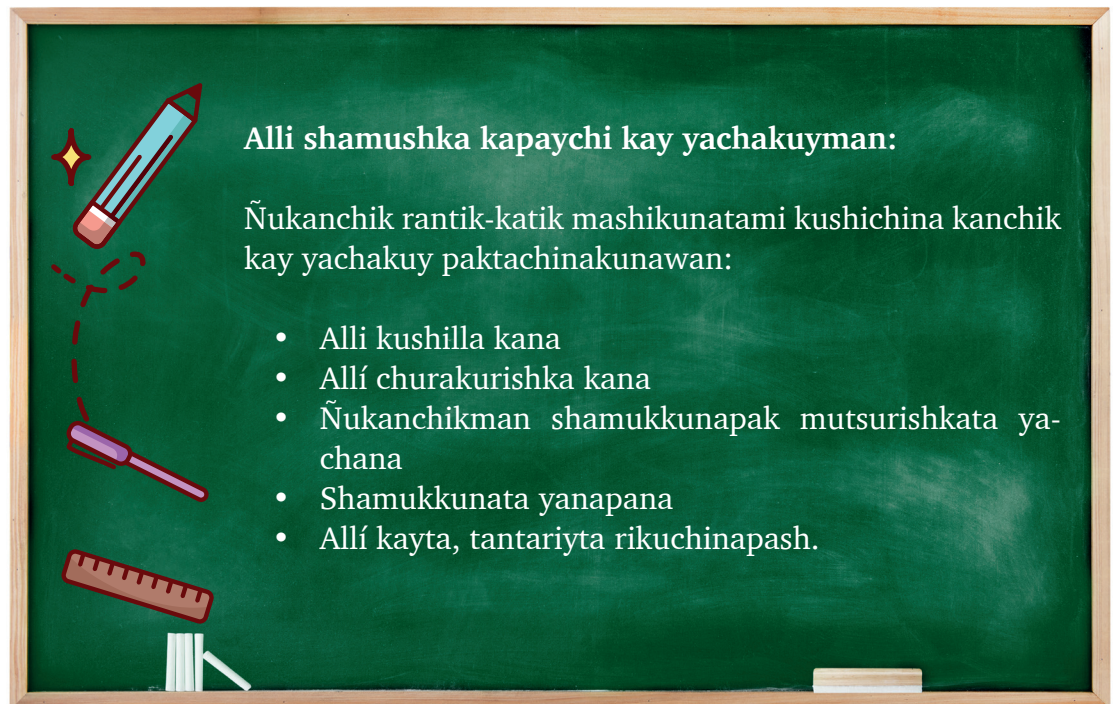


RUNAPURA RIKSIRINA RANTIKTA CHASKINA

CURSO #1
ID:EMP-001



UNIDAD 2

KICHWA:**Kallarishunchik:**

Kallarimantapachami allitapacha ñukanchikman shamuk mashikunata rikuryana kanchik kushilla, mishkilla rimachishpa, paykunapak mutsurishkata tapushpa, ashtawanka paykunami imata rantinata katunata munaktapash yachanka.

Allí shamushka kapay, yupaychani kayachimushkamanta, killkashkamanta; imakupitak yanapayta ushapani nishka shimikuna, kushilla kanapash allipachatami yachana kanchik ñukanchikpak katurinakuna alliman richunka.

Shinallata mutsurishkami maykanllakuna shamukkunata chaskikkunaka chuyalla kachun, ashikllapash, chayka ima katurinakunapash llankaykunapipash allipachami rinkakuna, ashtawan kushi kushimi rikuryana kanchik.

Ñukanchikpakman rantikkuna shamushpaka yachana, uyanami kanchik paykunapak mutsurishkakunata, ñukanchikpash charinchikchu paykunapak mutsurishkata.

Katipika yachanami kanchik chay katurinaka imapillatak allikunata charikta, shinami rimarinakuyka kimiklla kushillapash paktachirin ñukanchikman shamukkuna imakutapash rantichun.

Maymantami imakutapash rantichunka rikuchina, mallichina, atichinatapash yuyana kanchik, shina paktachishpaka ñawpamanmi riririnka, mana kashpaka ñukanchikpa katurinakunaka urmanallami kan.

Ashtawanka allí kushilla chaskishpa katukukpika kutinmi chayamunka, shukkunamanpashmi willachinka.

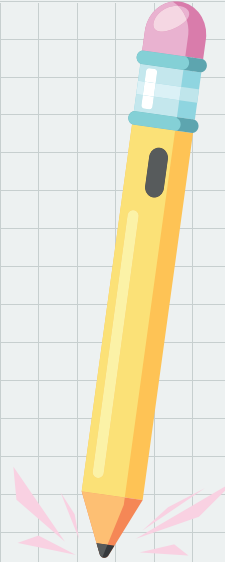
Kay hawa paktachinakunataka mana kallarik tuparinakuypilla kanachu, ashtawanka kutin kutinllami shina kanata rikuna.

Shinaka yachakunami kanchik allitapacha rikuryana shamukkunaman, ima killkaunata kushpa, williwillita yupakunata, zirmakunata mañashpa, shuktak pankakunatapash chaykunapi riksichinjkapak, rimarinkapakpash imakunalla katurina tyakta, imalla imalla tyashkaku-nata willachinkapak

Chay riksirishpa rimanakuyka may mutsurishka kan, chay shinaka allipacha katurinaka ñawpaman rikunkallami, ashtawan ashtawan pachakunapipash mirarishpa.

Mana llullashpapacha riksichishpa katikukpipash, rantikkunaka ñapash hamutanllami.

Allipacha kay katuykunapika kashpallami hatunyarinata usharinka. Nishkatapacha rimana mutsun, hatuykunapipash mana llullashpaka kanachu kan, ashtawanka rikuna kan ñukanchikman shamukkuna shamuk pachakunapipash allikachishka kanakukta.



Shina mana llulashpa kashpallami ima katurikunapipash alliman riririnka, imatapash kacharirinka.

Katukkuna kutichishpa imakutapash riksichishka kashpallami, kati katilla katuriykunaka tyanka, rantikkunapak kushilla kashkamanta, manarak, kipamanpash alliman karirinaka mutsurishkatapacha riksi-chishka, rantishka katushkapash kashkamanta.

Kallarimantapachami ashawanlla kashpapash allí katurina kan, chay shinallami maykankuna shamukkunapash kushiyarishpa sakirinkuna. Shinaka alipacha katurinakunapika ñawparinkapakka allikuta purina ñanta sumakyachina achikyachina, chaypillami ñukanchikpak llankaytapash rikuchiririnka.

