



# RUNAPURA RIKSIRINA RUNAPURA RIKSIRINAPAK MUTSURINA

CURSO #1  
ID:EMP-001



**UNIDAD 1**



**KICHWA:****SHUKNIKI YACHAKUNA:**

Kushikunchik llankayta yuyarishkamanta: ñami shuk purinakupi kapashkanki.

Llankakkuna, allí shamushka kapaychik kay yachakuyman UTN hatun yachanawasi, ayllupi, llankay-wasikunapi, ayllu-llaktapipash aylluyarishpa kanamanta yachachikrinchik.

Ñukanchikka ñawpa pachakunamantapachami tantarishpa llankaykunata paktachishkanchik, makipurarishpa, minkapi, yanaparirishpa, ranti ranti imakutapash kawsaypak tarinkapak.

Kay shina allí kawsayta paktachinkapakka rimanakuymi (communis) mutsurishka kashka, rimarishpallami imatapash rurankapakka paktachirin kashka, chaypakmi unanchaykuna, killkay-rimaykunapash tyashkakuna.

**Chaymantami kay kuska sami rimarinakuy tyashka:****1.- Rimarinakuy**

Kaytaka shuk shukwan rimarishpallami paktachirin kashka ña rimaywan, killkashpapash.

**2.- Manatak rimashpapash**

Kaytaka ñukanchik kuyurikunawanllatakmi yuyaymantalla rimarinlla kashka, ña purishpa, kuyurishpa, rikuchishpapash.

Kay mashiyarina llankay yachakuypika kay yuyaytami paktachina;

**“TUKUYMI RIMARINAKUY”**

¿Imatak nisha nin?, tukuy pachapimi rimarinakunchik ñukanchik ukunpawan, chaki, maki, ñawi, ashtawankarin ñukanchik hatunakunapika rantikkunawanpash achikllata rimarishpami paktachinakunchik. paktachinakuymi mutsun allí rimarinakuykunapakka:

**Rikuywan.-** maymantapachami ñawiwana rikushpa rimarina.

**Ñawi kuyuriwanpash:** ñukanchik wañi-uyawanllatami kushi kushi-lla, llakilla, shinalla, mishkilla kashkatapash rimarinchik, ashtawanka chay shina rikuchiwanllatami kushichinchi, llakichinchipash.

**Rimaykunawanllatak:** imatapash rimayka ninan mutsushkami, shinchi, amuklla kashkatapash, chay shinami allí rikurin chayshuk mashikuwanpash mashiyarinkapak, chaypimi ñukanchik yuyta, munayta, allí uyashpa paktachina kan.

**Uyana:** allitapachami uyana, allí rimana, uyanata yachakunami kanchik, allí paktachinkapak.

Shinami kay 4 paktachinakuyta yachana kan allipacha rimarikuna tyachunka.

Kunanka allí mashiyarinkapak imatalla llankaykunapak paktachinata rikushun:

### **Rimarina:**

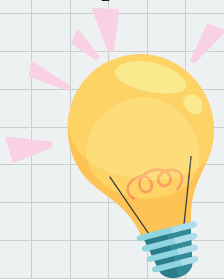
Rimarishpallami ñukanchik yuyaykunata, munashkakunata, kushi-llakikunatapash riksichirin, kaykunata punchantanmi paktachina kan.

Ashtawankarin llankakkunapakka allí mashiyarinkapak, aylluyarinkapak ninanta mutsurin, chaypakka kaykunatami paktachina.

### **Yanaparirina:**

Kay allí paktachinataka ñukanchikpuramantallatakmi llukshin: ranti-manta shukkunawanpash allí kankapak.

**Yuyarinakuy:** kaytapash yachana mutsun ranti rantilla yuyarishpa, llakirishpa, kushiyarishpa, manllashpa, munashpapash kanakunkapak.



**Kushiyarishpa:** pitapash mishki shimiwanmi napan, rimarinapash. Pacha pakta pakta kana kan; paktachina, katuk, rantik, llankakkunapuraka allitapachami yachakushpa paktachina kan.

## Chaymantami kay kuska sami rimarinakuy tyashka:

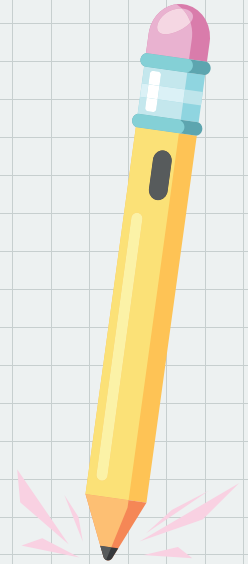
### 1.- Rimarinakuy

Kaytaka shuk shukwan rimarishpallami paktachirin kashka ña rimaywan, killkashpapash.

### 2.- Manatak rimashpapash

Kaytaka ñukanchik kuyurikunawanllatakmi yuyaymantalla rimarinlla kashka, ña purishpa, kuyurishpa, rikuchishpapash.

Kay mashiyarina llankay yachakuypika kay yuyaytami paktachina;



### “TUKUYMI RIMARINAKUY”

¿Imatak nisha nin?, tukuy pachapimi rimarinakunchik ñukanchik ukunpawan, chaki, maki, ñawi, ashtawankarin ñukanchik hatunakunapika rantikkunawanpash achikllata rimarishpami paktachinakunchik. paktachinakuymi mutsun allí rimarinakuykunapakka:

**Rikuywan.-** maymantapachami ñawiwán rikushpa rimarina.

**Ñawi kuyuriwanpash:** ñukanchik wañi-uyawanllatami kushi kushilla, llakilla, shinalla, mishkilla kashkatapash rimarinchik, ashtawanka chay shina rikuchiwanllatami kushichinchi, llakichinchipash.

**Rimaykunawanllatak:** imatapash rimayka ninan mutsushkami, shinchi, amuklla kashkatapash, chay shinami allí rikurin chayshuk mashikuwanpash mashiyarinkapak, chaypimi ñukanchik yuyta, munayta, allí uyashpa paktachina kan.

**Uyana:** allitapachami uyana, allí rimana, uyanata yachakunami kanchik, allí paktachinkapak.

Shinami kay 4 paktachinakuyta yachana kan allipacha rimarikuna tyachunka.

**Kasurina:** maymanta shukkunata kasuna, kumuna, allikachina, shikanlla kashkatapash rikushpa paktachina kan.

Ranti ranti kay llankakpurakuna paktachishpaka allipacha rikurin, ñukanchikllata yanaparirishpa imapipash ñawparinakunkapak.

**Tukunchinkapak, YUYARIPAY:** Allipacha llankakka mana yankalla shuk llankaypillaka kanchu.

Llankakpacha kashkata paktachinkapakka ñukanchikllata, tukuyipi tukuykunawan allí yachashka, kana kan kikipak, ayllupak, ayllu llaktapak mirarik kachun.

### **SHUKNIKI YACHAKUNA:**

Kushikunchik llankayta yuyarishkamanta: ñami shuk purinakupi kapashkanki.

Llankakkuna, allí shamushka kapaychik kay yachakuyman UTN hatun yachanawasi, ayllupi, llankay-wasikunapi, ayllullaktapipash aylluyarishpa kanamanta yachachikrinchik.

Ñukanchikka ñawpa pachakunamantapachami tantarishpa llankaykunata paktachishkanchik, makipurarishpa, minkapi, yanaparirishpa, ranti ranti imakutapash kawsaypak tarinkapak.

Kay shina allí kawsayta paktachinkapakka rimanakuymi (**communis**) mutsurishka kashka, rimarishpallami imatapash rurankapakka paktachirin kashka, chaypakmi unanchaykuna, killkay-rimaykunapash tyashkakuna.



## **Kunanka allí mashiyarinkapak imatalla llankaykunapak paktachinata rikushun:**

### **Rimarina:**

Rimarishpallami ñukanchik yuyaykunata, munashkakunata, kushi-llakikunatapash riksichirin, kaykunata punchantanmi paktachina kan. Ashtawankarin llankakkunapakka allí mashiyarinkapak, aylluyarinkapak ninanta mutsurin, chaypakka kaykunatami paktachina.

### **Yanaparirina:**

Kay allí paktachinataka ñukanchikpuramantallatakmi llukshin: rantimanta shukkunawanpash allí kankapak.

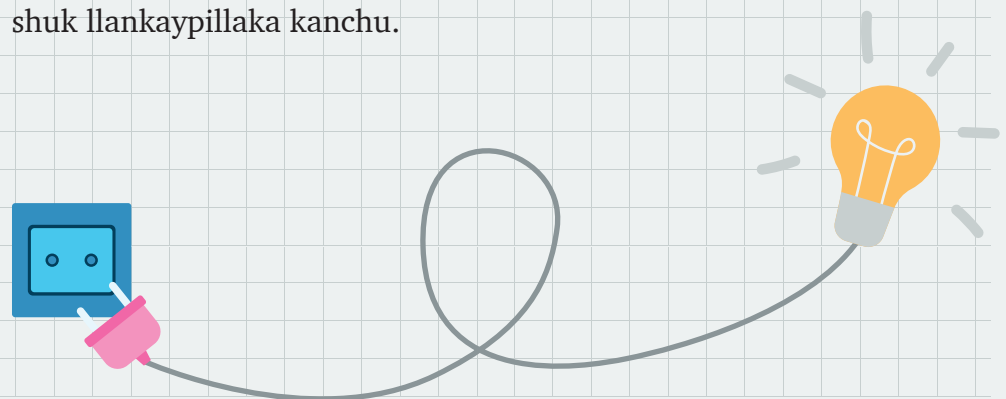
**Yuyarinakuy:** kaytapash yachana mutsun ranti rantilla yuyarishpa, llakirishpa, kushiyarishpa, manllashpa, munashpapash kanakunkapak.

**Kushiyarishpa:** pitapash mishki shimiwanmi napana, rimarinapash. Pacha pakta pakta kana kan; paktachina, katuk, rantik, llankakkunapuraka allitapachami yachakushpa paktachina kan.

**Kasurina:** maymanta shukkunata kasuna, kumuna, allikachina, shikanlla kashkatapash rikushpa paktachina kan.

Ranti ranti kay llankakpurakuna paktachishpaka allipacha rikurin, ñukanchikllata yanaparirishpa imapipash ñawparinakunkapak.

**Tukunchinkapak, YUYARIPAY:** Allipacha llankakka mana yankalla shuk llankaypillaka kanchu.



Llankapacha kashkata paktachinkapakka ñukanchikllata, tukuyipi tukuykunawan allí yachashka, kana kan kikipak, ayllupak, ayllu llaktapak mirarik kachun.

Kay shukniki paktachinakuyka llankarishun Programa Emprendamos UTN hatun yachana wasimi yanapakun, chaypimi llankaymanta yachaykuna, killkatinakuna, shuktak mutsurishkapash.

Taripanataka kay zirmapillatami paktachina.

Ñawpaman ripaychik muskuykunata paktachinkapak ayllukuna.







